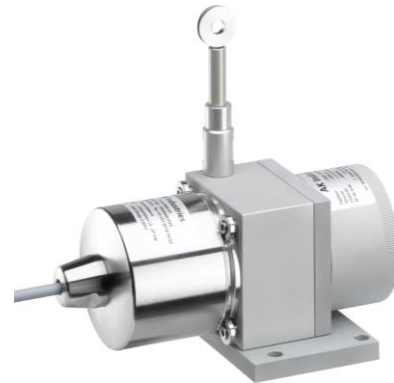


## CD060 absolute output – Measurement range 0 up to 1500 mm

### Specifications:

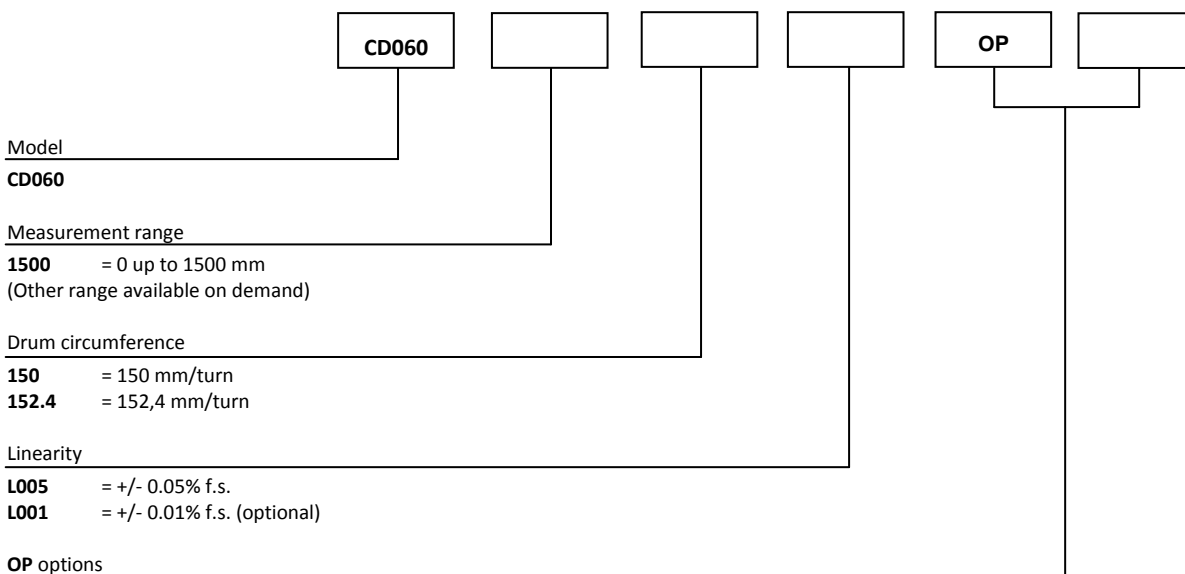
<b>Measurement range</b>	<b>0 up to 1500 mm</b>
<b>Sensing device</b>	<b>Absolute encoder – cf absolute encoder datasheet</b>
<b>Material</b>	<b>Body and cover - aluminium (RohS)</b>
	<b>Measuring cable – Stainless steel</b>
<b>Cable diameter</b>	<b>0,60 mm</b>
<b>Standard linearity</b>	<b>+/- 0,05% f.s.</b>
	<b>+/- 0,01% f.s. (optional)</b>
<b>Protection class</b>	<b>IP64</b>
<b>Max. Velocity</b>	<b>10 M/S</b>
<b>Max. Acceleration</b>	<b>20 M/S<sup>2</sup> (before cable deformation)</b>
<b>Weight</b>	<b>≈ 1000 g</b>
<b>Operating temperature</b>	<b>-20° to +85°C</b>
<b>Storage temperature</b>	<b>-40° to +85°C</b>



### Cable forces:

Measurement range in mm	Min. pull-out force	Max. pull-out force
1500	≈ 9,00 N	≈ 12,00 N

### Ordering reference:



- AC** = Complete anodizing
- BR** = Cleaning brush for the cable
- CO** = Fixing of the measuring cable with a lug
- CP** = Fixing of the measuring cable with a clevis
- EM** = Fixing of the measuring cable with a clip
- EN** = Measuring cable coated with polyamide
- M4** = Fixing of the measuring cable with a M4 threaded rod
- TEV** = Water evacuation holes

Reference example with an encoder (cf ex. PHM5 / MHM5 / THM4S10 datasheet):

CD060-1500-150-L005 + PHM5\_10//PSSG//13B12D5//S6R//\*\*03\*\*

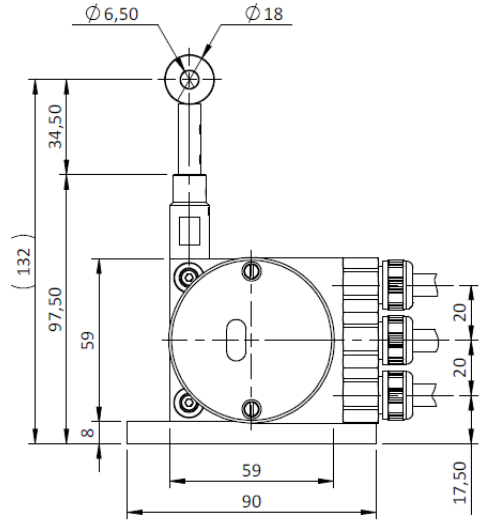
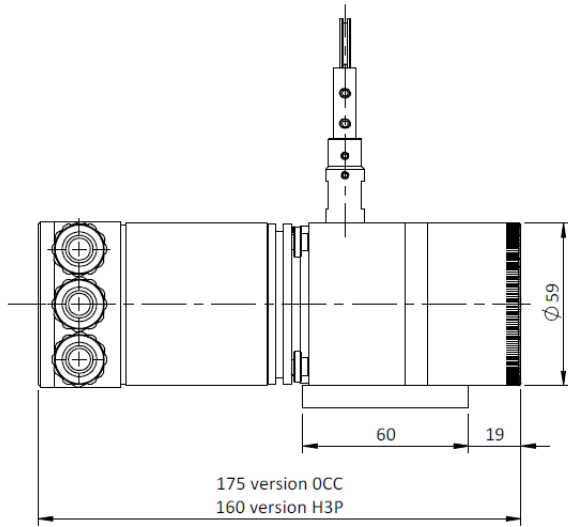
### Nota:

- encoder selected must be with 10mm shaft,
- \*\*03\*\* means that the encoder is equipped with a servo flange in order to be mount on the CD060,
- The resolution of the system depends of the encoder pulses number, example: with a 150mm drum perimeter and a 8192ppr encoder, 1 encoder pulse will be emitted each 0,0183mm (150/8192).

Made in France

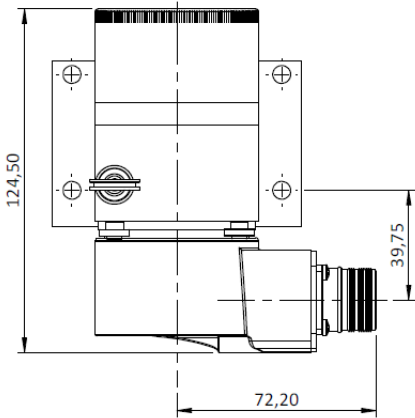
## CD060 absolute output – Measurement range 0 up to 1500 mm

### Dimensional Drawing



With MHM5 - PROF/CANO/DNET encoder  
 OCC or H3P connection  
 (Terminal box)

With PHM5 - SSI encoder  
 S6R or S8R connection  
 (Male connector M23 - 12 pin CW or CCW)



With MHM5 - SSI encoder  
 PRL connection  
 (Male connector M23 - 12 pin CCW)

