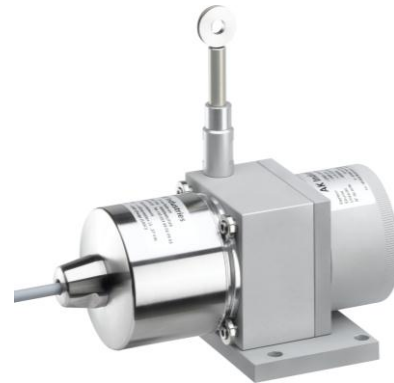


## CD060 incremental output – Measurement range 0 up to 1500 mm

### Specifications:

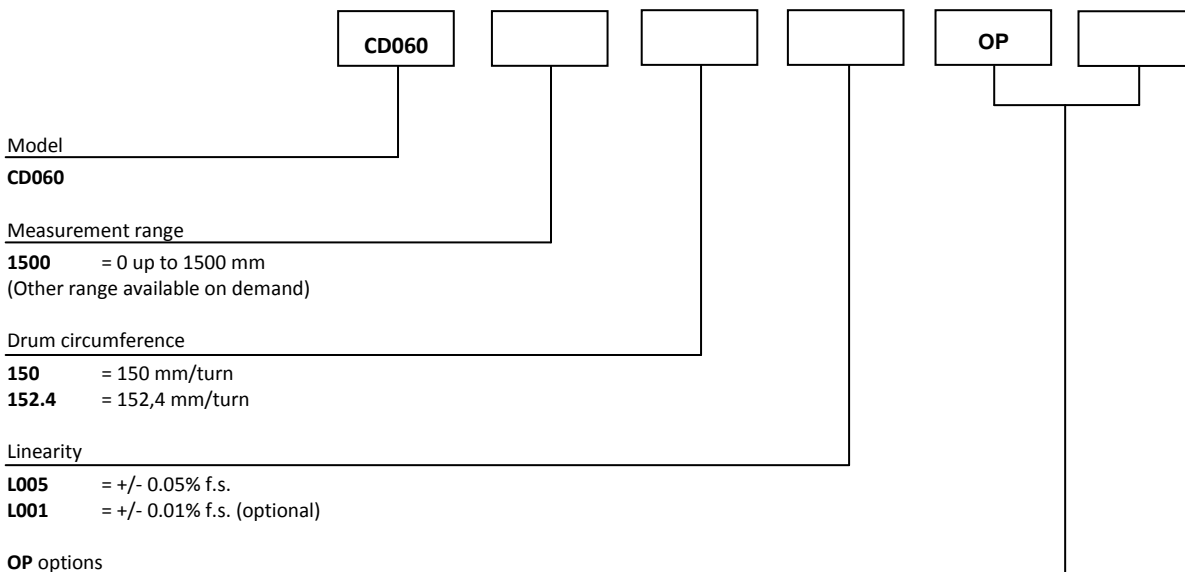
<b>Measurement range</b>	<b>0 up to 1500 mm</b>
<b>Sensing device</b>	<b>Incremental encoder – cf incremental encoder datasheet</b>
<b>Material</b>	<b>Body and cover - aluminium (RohS)</b>
	<b>Measuring cable – Stainless steel</b>
<b>Cable diameter</b>	<b>0,60 mm</b>
<b>Standard linearity</b>	<b>+/- 0,05% f.s.</b>
	<b>+/- 0,01% f.s. (optional)</b>
<b>Protection class</b>	<b>IP64</b>
<b>Max. Velocity</b>	<b>10 M/S</b>
<b>Max. Acceleration</b>	<b>20 M/S<sup>2</sup> (before cable deformation)</b>
<b>Weight</b>	<b>≈ 1000 g</b>
<b>Operating temperature</b>	<b>-20° to +85°C</b>
<b>Storage temperature</b>	<b>-40° to +85°C</b>



### Cable forces:

Measurement range in mm	Min. pull-out force	Max. pull-out force
1500	≈ 9,00 N	≈ 12,00 N

### Ordering reference:



### Reference example with an encoder (cf DHM5 / GHM5 datasheet):

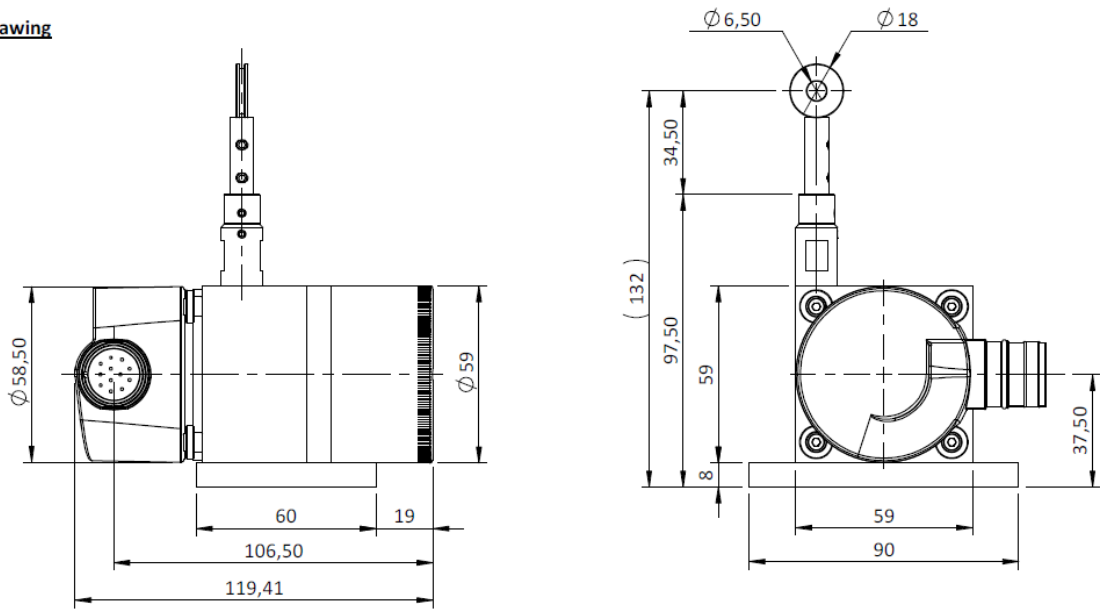
CD060-1500-150-L005 + DHM5\_10//PG59//01500//G6R//\*\*03\*\*  
 CD060-1500-152.4-L001-OP-PV + GHM5\_10//5GT9//00762//G2R//\*\*03\*\*

### Nota:

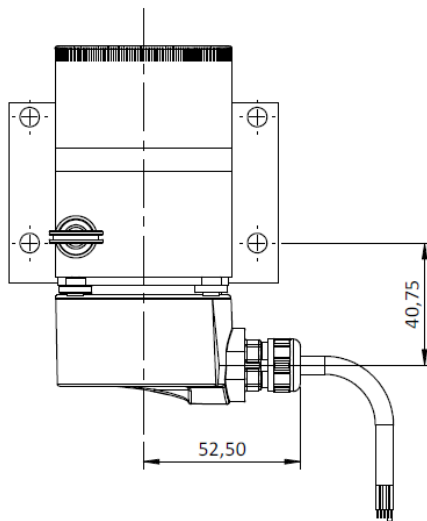
- encoder selected must be with 10mm shaft,
- \*\*03\*\* means that the encoder is equipped with a servo flange in order to be mount on the CD060,
- The resolution of the system depends of the encoder pulses number, example: with a 150mm drum perimeter and an 1500ppr encoder, 1 encoder pulse will be emitted each 0,1mm.

## CD060 incremental output – Measurement range 0 up to 1500 mm

### Dimensional Drawing



With DHM5 encoder  
GPR or G3R connection  
(PUR cable - 12 wires or PVC cable - 8 wires)



With DHM5 encoder  
G6R or G8R connection  
(Male connector M23 - 12 pin CW or CCW)

