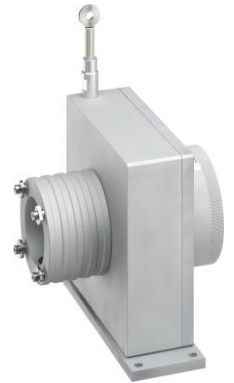


CD150-MEC mechanical devices - Measurement range 0 up to 6000 mm

Specifications:

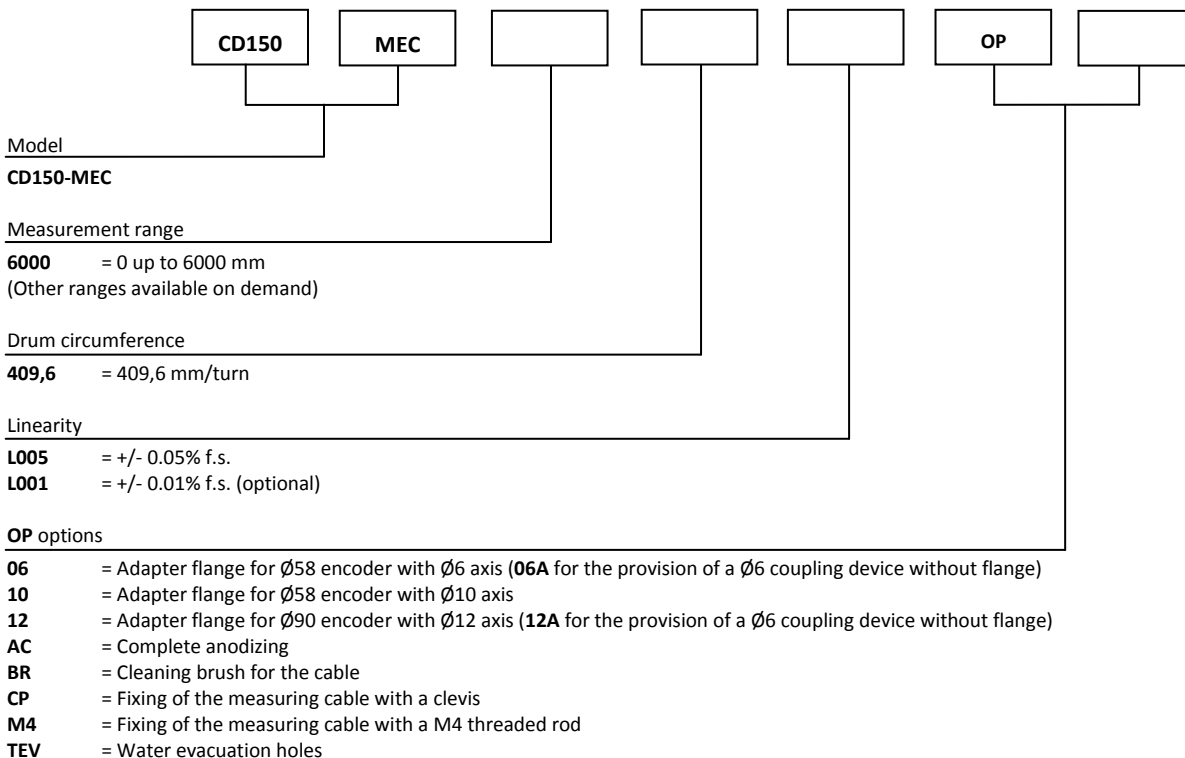
Measurement range	0 up to 6000 mm
Circumference drum	409,6 mm/turn
Sensing device	Adaptable with all our incremental or absolute encoders
Material	Body and cover - aluminium (RoHS) Measuring cable – Stainless steel
Cable diameter	0,60 mm
Standard linearity	+/- 0,05% f.s. +/- 0,01% f.s. (optional)
Max. Velocity	10 m/s
Max. Acceleration	5 m/s² (before cable deformation)
Weight	≈ 3000 g
Operating temperature	-20° to +80°C
Storage temperature	-30° to +80°C



Cable forces:

Measurement range in mm	Min. pull-out force	Max. pull-out force
6000	≈ 10,00 N	≈ 13,50 N

Ordering reference:



If no option is specified for the adapter flange, the draw-wire sensor will be supplied as standard with a Ø10 coupling brace without a flange. For the adaptation of an encoder or other sensor device which does not belong to our range, please contact us.

Reference example: CD150-MEC-6000-409,6-L005-OP-10-AC

Made in France

CD150-MEC mechanical devices - Measurement range 0 up to 6000 mm CE

Dimensional Drawing

