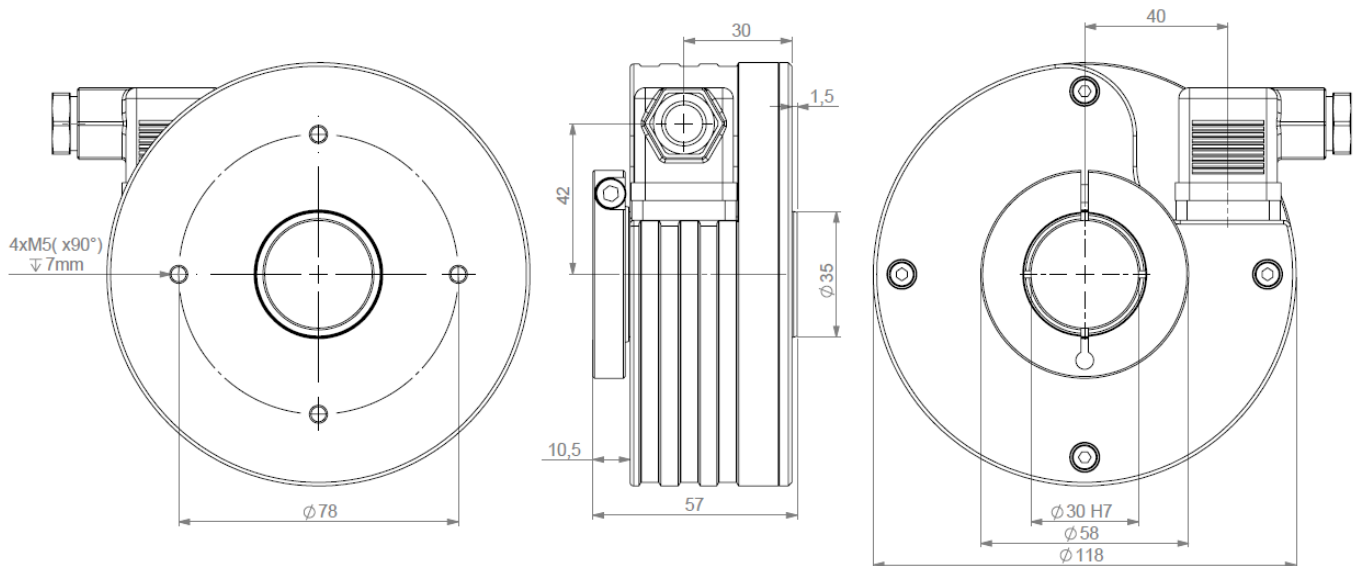


PRELIMINARY - ELECTRONIC OVERSPEED SWITCH – SELF POWERED

- Electronic overspeed switch – self powered: no power supply needed.
- Especially designed for heavy-duty (cranes, steel, paper, wood – mills...).
- Compact and robust conception.
- Hollow shaft of up to 30mm, adaptation of the bore size with composite hub for thermal and electric insulation.
- Switching capability: 240V/16A.
- Speed calibration: from 600 to 5000 rpm – in our factory.
- Its connection is done with CNOMO connector.
- Double or triple mounting possibility in combinations with incremental, tachometer or absolute encoders.



GOEM30 DIMENSIONS



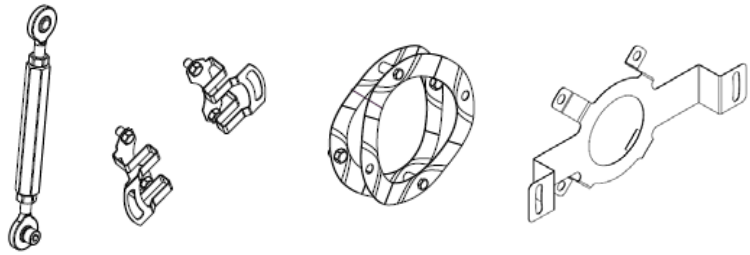
MECHANICAL CHARACTERISTICS

Material	Cover : aluminium	Shaft seal	Viton
	Body : aluminium	Shocks (EN60068-2-27)	$\leq 2\,000\text{ m.s}^{-2}$ (during 6 ms)
Shaft	Stainless steel	Vibration (EN60068-2-6)	$\leq 200\text{ m.s}^{-2}$ (10 ... 1 000 Hz)
Bearings	6807 serie	Encoder weight (approx.)	1, 000 kg
Maximum loads	Axial : 50 N	Operating temperature	- 30 ... + 85 °C (Sensor T°)
	Radial : 80 N	Storage temperature	- 40 ... + 80 °C
Shaft inertia moment	$\leq 80.10^{-6}\text{ kg.m}^2$	Protection(EN 60529)	IP 64
Torque	$\leq 50.10^{-3}\text{ N.m}$	Torque (ring screw)	nominal: 3N.m, break: 4N.m
Permissible max. speed	5 000 min ⁻¹	Theoretical mechanical lifetime 10 ⁹ turns (F _{axial} / F _{radial})	
Continuous max. speed	3 500 min ⁻¹	25 N / 40 N : 140	50 N / 80 N : 17

PRELIMINARY - ELECTRONIC OVERSPEED SWITCH – SELF POWERED

MOUNTING SYSTEM

Torque arm or "DAC" – Anti-Rotation Devices can be used to mount the encoder. These are designed to maintain the sensor and compensate shaft run outs.

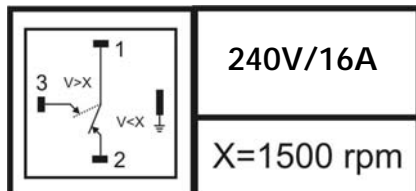


ELECTRICAL CHARACTERISTICS

EMC	EN 50081-1, EN 61000-6-2
Isolation	500 V
Commutation hysteresis	-10%
Switching capability	240V/16A
Speed calibration	Between 600 and 5000 rpm – calibration in factory
Accuracy	<1%

STANDARD CONNECTION – CNOMO CONECTOR – 4 PINOUTST

Contact 1 to 3 can be connected according to the desired configuration (rest, work or opposite)



The earth pin of the connector must be connected to the ground of the installation

AVAILABLE COMBINATION (Consult us for special version: ex: Mounting system / connection / specific speed...)

Possibility to do combination with incremental encoder / tachometer / absolute encoder / mechanical overspeed switch

Note : The switch commutation speed is calibrated in our factory, no correction and no later modification is possible

ORDERING CODIFICATION

Consult us

Made in France